

## inubit EDI-solution – Electronic Data Interchange for efficient business processes

The Electronic Data Interchange (EDI) is the ideal and economic communication method for the continuous interchange of medium and high data volumes on the basis of long-term business relations.

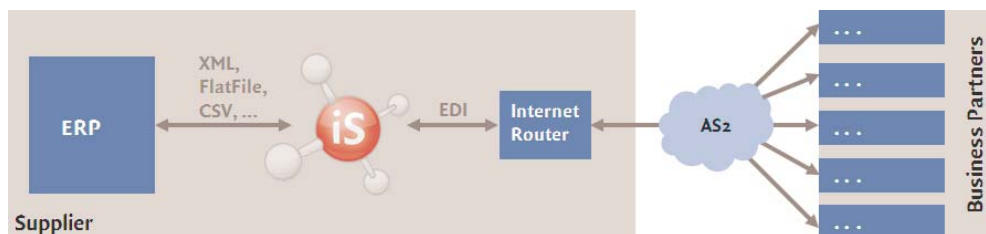
The purpose of EDI is the efficient communication with business partners as well as the automatic processing of electronic messages (e.g. orders, delivery

notes, invoices) without media breaks – independent of internal IT systems.

The use of Electronic Data Interchange between business partners is an important part in handling business processes effectively.

A company can benefit from multifaceted potentials on both the quantity and the quality level by introducing EDI:

- Reduction of administrative and handling costs
- Process optimization and quality assurance by shorter business cycles and reduction of manual activities
- Strategic values such as higher customer satisfaction and customer retention, improved business relations, and competitive advantages by a better service supply



Functionality of EDI using the inubit BPM-Suite and EDIINT AS2

### Realization of EDI-scenarios by the inubit BPM-Suite „iS“

For the fast and efficient realization of electronic data interchange the Entry Edition of the inubit Suite is already suitable. Thereby, the included standard integration server serves as the data turning platform between internal IT systems and a communication platform for integration of external business partners.

Already the Entry Edition of the inubit Suite allows besides the integration of different partners and IT systems, the support of all required formats and protocols for EDI-based data exchange as well as the self-dependent mapping of message structures.

The transmission of transferred information to downstream systems can be effected in formats like XML, inhouse formats (Flat File), Excel-CSV or directly into data bases. Therewith the data can be easily and quickly booked and further on processed in the enterprise resource planning systems or other internal IT systems.

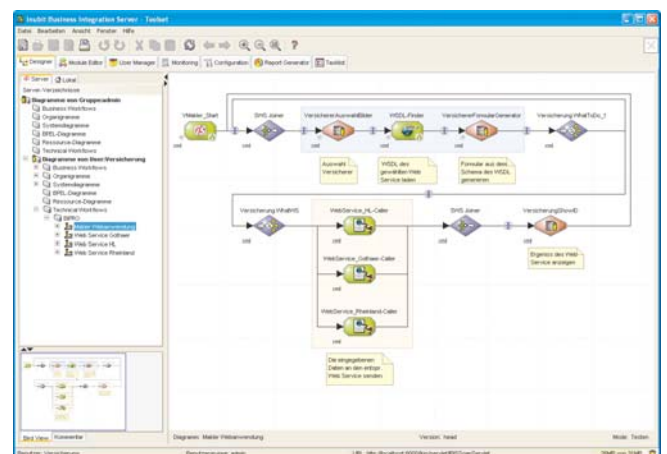
Thus the Entry Edition includes all functionalities for the use of EDI and

due to preconfigured process packages and partner profiles, it meets especially the requirements of small and medium sized companies, which want to react fast and economically to their customers' requests for Electronic Data Interchange. Due to the intuitive and user-friendly user interface of the inubit Suite and the simple configuration of Technical Workflows, the integration of business partners as well as special modifications can be carried out by the companies themselves.

The preconfigured partner profiles support all message types recommended by GS1 Germany, such as INVOIC, ORDERS, and DESADV, as well as the communication over EDIINT AS2. By using the state-of-the-art communication standard EDIINT AS2 costs for communication are clearly reduced in comparison to the

classical X.400 with increased security and reliability. To match all requirements, the connection to the SINFOS-data-pool is also supported.

Thanks to the inubit BPM-Suite as a continuous product for process modeling and automation, individual requirements to data exchange, e.g. mapping of preliminary tests in internal and external systems and partners can be integrated over communication ways different to EDI.



## Preconfigured partner profiles ease the fast access to electronic data interchange

As member of the IT service provider circle of GS1 Germany, inubit has built a wide scope of competences especially for the retail industry. With the preconfigured partner profiles for all big trading-companies, inubit offers suppliers a solid basis for the EDI-implementation.



These fast to implement partner profiles comprise e.g. the profiles of the following trading-companies:

Douglas, EDEKA, Hornbach, Karstadt, Kaufring, Markant, Max Bahr, Metro, Müller, OBI, Real, REWE, Tengelmann, ...

The profiles are available for all established processes (incoming ORDERS, outgoing INVOIC, invoice list, outgoing ORDRSP, outgoing DESADV, and outgoing RECADV) and therewith allow a quick realization of EDI-integrations.

Furthermore, for automotive manufacturers and suppliers inubit offers VDA-compliant profiles both for incoming and for outgoing messages. These profiles support the industry-specific communication via OFTP (via ISDN, X.25 or TCP/IP).

Automotive-inbound: VDA 4905, 4915, 4908

Automotive-outbound: VDA 4913, 4906 and DFÜ-invoice protocol in version 10, 11, 12, 13

## Electronic Data Interchange – use of „state-of-the-art“ technologies and protocols like EDIINT AS2

Regarding the fast growth of the Internet and the possibilities resulting thereof, new perspectives concerning the Electronic Data Interchange arise.

A technology built upon this is the EDIINT AS2 protocol, which is used more and more for the secure and smooth transfer of business messages.

inubit also relies on AS2 as transfer protocol within the inubit EDI-solution.

EDIINT stands for „EDI over the Internet“, AS2 for „applicability statement 2“.

With EDIINT AS2, a protocol was defined, which grants the secure data interchange via Internet – under simultaneous retention of the availability rate and the benefits of existing EDI-processes via broadband-nets/ value-added services such as the X.400 network.

AS2 is based on existing and widespread standards, to grant a reliable and secured data interchange. This includes using electronic certificates to guarantee that messages are only sent to the designated receiver, that the transfer is secure, and the identity of the sender is authentic. Furthermore AS2 supports encryption and electronic signature to exclude any changes of message contents.

## The inubit EDI-solution – „state-of-the-art“-technologies for successful processes

- Complete EDI-support (EDIFACT, ANSI X.12, VDA, Datanorm, etc.)
- Communication via all protocols (e.g. AS2, X.400, OFTP, Mail)
- High number of available system connectors
- Flexible integration of any Backend-systems (e.g. direct application interfaces, access to data bases, file-based data exchange)
- Integrated Mappingtool including context-sensitive help
- Mapping per Drag & Drop with integrated Debugger
- 100% compliant to XSLT-standard
- End-to-end-process monitoring
- Java / J2EE, XML, XSL / XSLT
- Multi platform capable

## Extract from our references using the inubit EDI-solution

