

## Simple and fast integration of SAP with the inubit BPM-Suite

Nowadays, the company software of the SAP AG is the most common ERP system worldwide. It enables an efficient automation of numerous inhouse business processes – from order entry to accounting.

In times of increasing specialization of companies and the concentration on core competencies the value adding processes are in an intense flux. The so far focus on inhouse processes is replaced by an integrated process consideration, containing inhouse as well as cross-company process steps.

But there is still another significant challenge the companies have to deal with

currently and in the future to an increasing degree. Because of the highly dynamic economic environment, shorter innovation and market cycles the hitherto very static process sequences are a huge competition risk.

To handle this risk and to use the offered market opportunities, the complete process cycles have to be modeled noticeably flexible and developed permanently.

Against this background for all SAP users the necessity emerges to ensure this flexibility not only for the processes within the SAP system.

Significantly bigger innovation potentials are opened up regarding the less standardized processes and process parts executed beyond the SAP system.

In particular there is the automation of cross-company processes for the realization of a highly efficient supply chain management – but also the integration of further internal IT systems (like other ERP systems).

But not only complete IT-based processes have to be considered. Remarkable return on investments are achieved also due to the active integration of employees and customers for instance via workflow-based portal solutions.

### The inubit BPM-Suite with SAP connector: a powerful platform for process automation

The inubit BPM-Suite „iS“ as leading software for an integrated Business Process Management on the market offers extensive opportunities for process automation. In connection with the efficient SAP connector plenty of SAP systems can be flexibly integrated into the automated processes.

The inubit SAP connector provides numerous integration options with the SAP

system – independent from the system (R/2, R/3, ERP), the status of release and industry-specific solutions like SAP IS-U.

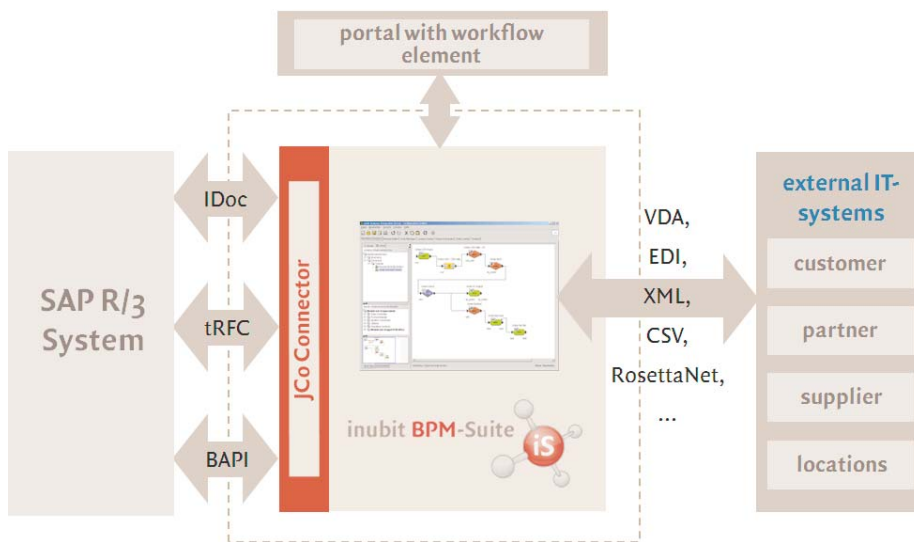
For that purpose all relevant interfaces regarding the SAP system (BAPI, IDoc and tRFC) are supported in the input as well as in the output. Therewith an automation of almost all processes will be provided.

Besides the direct connection of SAP systems the integration can be carried out completely via SAP XI whereupon all relevant standards like IDoc, RFC, SOAP as well as proxies are supported.

Due to the application of identical technologies within the inubit Suite and SAP XI (XML, XSLT, WebServices) not only a fast execution but also the guaranteed future of the total package is ensured.

The inubit Suite is not based on a transaction-oriented accounting model realizing noticeably cost-efficient projects in connection with SAP XI. Also the focused demand regarding the automation of processes – the reduction of process costs – is achieved even with high volumes.

The technically mature SAP integration with the inubit Suite can be combined flexibly with numerous further integration and communication solutions of inubit. In addition there are cross-industry solutions like e.g. the integration of electronic signature into processes as well as industry-specific solutions amongst others for power authorities, insurance companies and trading companies.



SAP connection with the inubit BPM-Suite

## Integration of external and internal systems

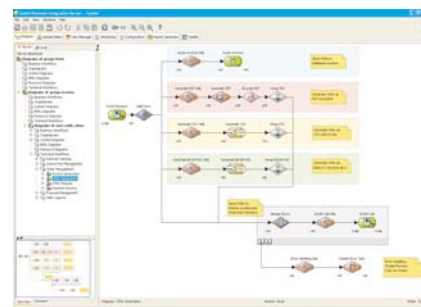
For the complete automation of internal and external communication the integration server, contained in the inubit Suite provides more than 70 standard connectors.

These support on one hand all relevant formats (EDIFACT, VDA, ANSI X.12, RosettaNet, XML, Excel) and all protocols (AS2, X.400, OFTP, OFTP V2, Web Services, HTTPS, e-mail, fax,...) but also the

connection of numerous internal systems like e.g. Microsoft Dynamics, Oracle or AS/400-based applications.

The configuration is achieved completely graphically – no programming is necessary.

Thus it is ensured, that the connection of systems can be carried out fast and adapted at any time – and therewith the required process flexibility is obtained.



Workflow-based system integration

## Integration of employees and customers via portals

An integrated automation of processes requires besides the integration of internal and external IT systems the involvement of employees and customers via portals.

Practically this necessity occurs in almost every process – from simple clearances via essential functional decisions to the point of realization of complete customer or supplier portals the application range is manifold.

The inubit BPM-Suite possesses with the integrated workflow component a powerful platform for the automation of these processes.

It enables the mere graphical configuration of processes and can be integrated completely into the SAP system.

Thus any processes can be realized transferring data to the SAP system on required locations or just receiving in-

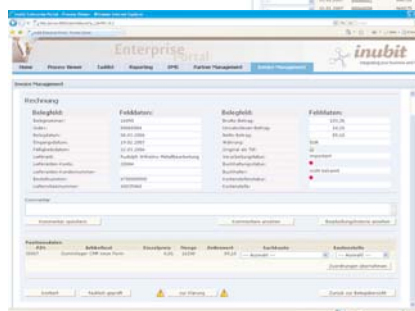
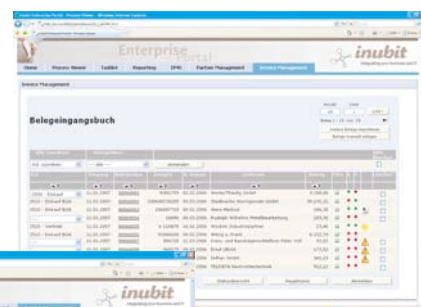
formation from the SAP and providing these to the user in the portal.

Basing on the free configurable workflow component inubit offers also pre-configured process packages, for instance for WebEDI and a portal-based solution for the automation of invoice reception. They are based on „best-practices“ and characterized by a fast implementation.

The workflow component ensures that processes are adaptable to new requirements or to company-specific processes at any time.

The SAP connector allows requesting any master data from the SAP system within the processes, to transfer

documents for further treatment to SAP or also to file them.



Portals with SAP-integration

## Advantages of the SAP-integration with the inubit BPM-Suite

- Release-secure interface for all SAP systems (R/2, R/3, ERP) and all industry solutions (for instance SAP IS-U)
- Integration of internal and external systems – over 70 standard connectors available
- Support of all common SAP-interfaces (BAPI, IDoc, tRFC)
- Request of processes from any ABAP code or JAVA code in the SAP system
- Platform independent application (available for Windows, Linux, HP UX, Solaris, etc.)
- 100% compatible to SAP XI / Netweaver
- Extensive monitoring and analysis tools
- Integration of the inubit BPM-Suite into the web application server from SAP possible